



jordan fishwick

Jodrell Meadow Whaley Bridge High Peak



Jodrell Meadow Whaley Bridge High Peak SK23 7AJ

£325,000



The Property

Spacious, versatile, extended accommodation! Standing in a generous plot, within easy reach of Whaley Bridge centre and railway station, a three bedroom semi-detached family home. Well presented throughout, this lovely family home would suit a variety of buyer. Whether it's the large garden, useful 17ft x 17ft garden/games room or simply the ground floor bedroom suite which is perfect for those family members wanting there own peace! Comprising: entrance hall, living room, separate dining room with French doors, contemporary kitchen and bedroom on the ground floor, complimented by a master bedroom with en-suite, bedroom two and family bathroom on the first floor. Pvc double glazing, gas central heating and ample driveway parking. No Chain and Viewing Advised.



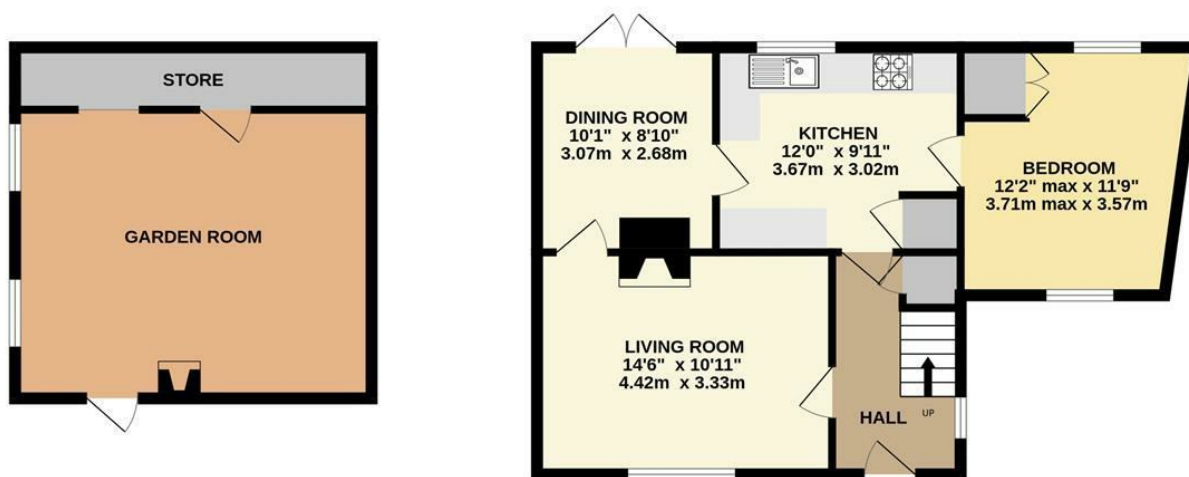
- Extended Versatile Semi-Detached Family Home
- Convenient Location For Whaley Bridge Amenities
- Large Garden
- Useful 17ft Games Room
- Well Presented Throughout
- Three Generous Bedrooms
- En-Suite and Family Bathroom
- Ample Driveway Parking
- No Chain

Postcode SK23 7AJ
 EPC Rating D
 Local Authority High Peak
 Council Tax C

Energy Efficiency Rating		
	Current	Potential
Very energy efficient - lower running costs		
(92 plus) A		
(81-91) B		
(69-80) C		81
(55-68) D	66	
(39-54) E		
(21-38) F		
(1-20) G		
Not energy efficient - higher running costs		
England & Wales	EU Directive 2002/91/EC	



GROUND FLOOR



1ST FLOOR



Whilst every attempt has been made to ensure the accuracy of the floorplan contained here, measurements of doors, windows, rooms and any other items are approximate and no responsibility is taken for any error, omission or mis-statement. This plan is for illustrative purposes only and should be used as such by any prospective purchaser. The services, systems and appliances shown have not been tested and no guarantee as to their operability or efficiency can be given.
Made with Metropix ©2026



These particulars are believed to be accurate but they are not guaranteed and do not form a contract. Neither Jordan Fishwick nor the vendor or lessor accept any responsibility in respect of these particulars, which are not intended to be statements or representations of fact and any intending purchaser or lessee must satisfy himself by inspection or otherwise as to the correctness of each of the statements contained in these particulars. Any floorplans on this brochure are for illustrative purposes only and are not necessarily to scale.

Offices at: Chorlton, Didsbury, Disley, Hale, Glossop, Macclesfield, Manchester Deansgate, Manchester Whitworth Street, New Mills, Sale, Wilmslow and Withington

14 Market St, Disley, Cheshire, Stockport SK12 2AA

01663 767878

disley@jordanfishwick.co.uk

www.jordanfishwick.co.uk